



5 Poplar Grove, Gainsborough, DN21 3TZ

£250,000

Located in the popular village of Scotter this three detached house offers good size and flexible living accommodation having three reception rooms, a conservatory and kitchen to the ground floor. Upstairs there are two double and one single bedrooms all with various fitted storage and a shower room with a separate toilet.

Additional benefits include driveway with ample parking, garage, gardens surrounding the property, situated in a cul-de-sac and is offered with no onward chain!

Please get in touch for more information or to book a viewing.

Entrance hall 12'3" x 6'1" (3.74m x 1.87m)



Conservatory 11'5" x 7'4" (3.50m x 2.26m)



Lounge 12'3" x 15'3" (3.74m x 4.67m)



Landing

Bedroom one 10'1" x 13'2" (3.08m x 4.02m)



Dining room 10'10" x 9'4" (3.31m x 2.87m)



Kitchen 10'9" x 12'6" (3.28m x 3.82m)



Sitting room 9'0" x 8'10" (2.76m x 2.71m)



Bedroom two 11'1" x 12'0" (3.39m x 3.66m)



Bedroom three 7'10" x 9'6" max (2.39m x 2.91m max)



Shower room 5'5" x 5'4" (1.66m x 1.65m)

Separate W.C

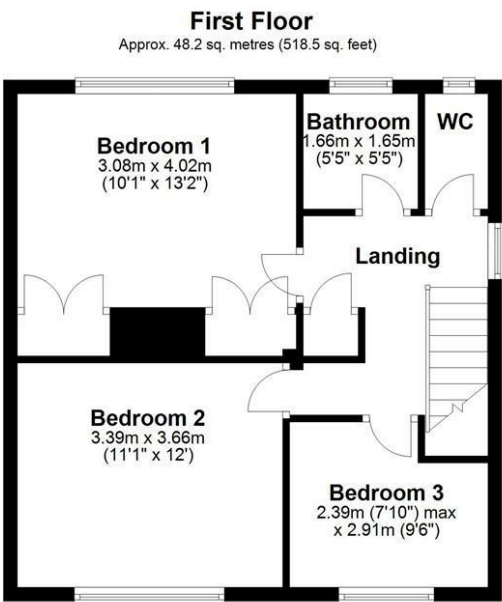
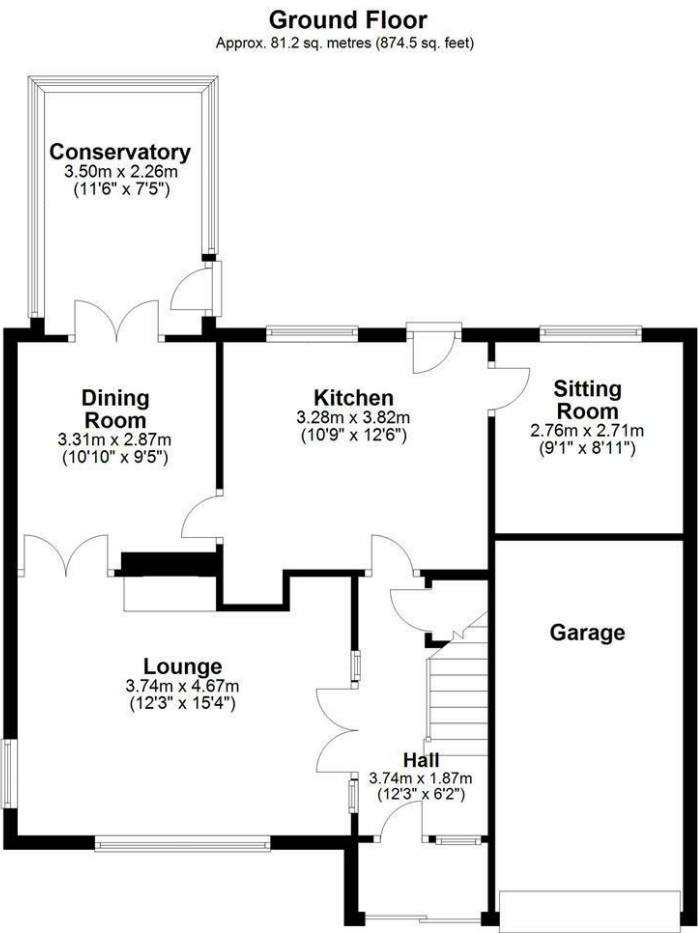
Separate W.C to shower room

Garage

Rear Garden

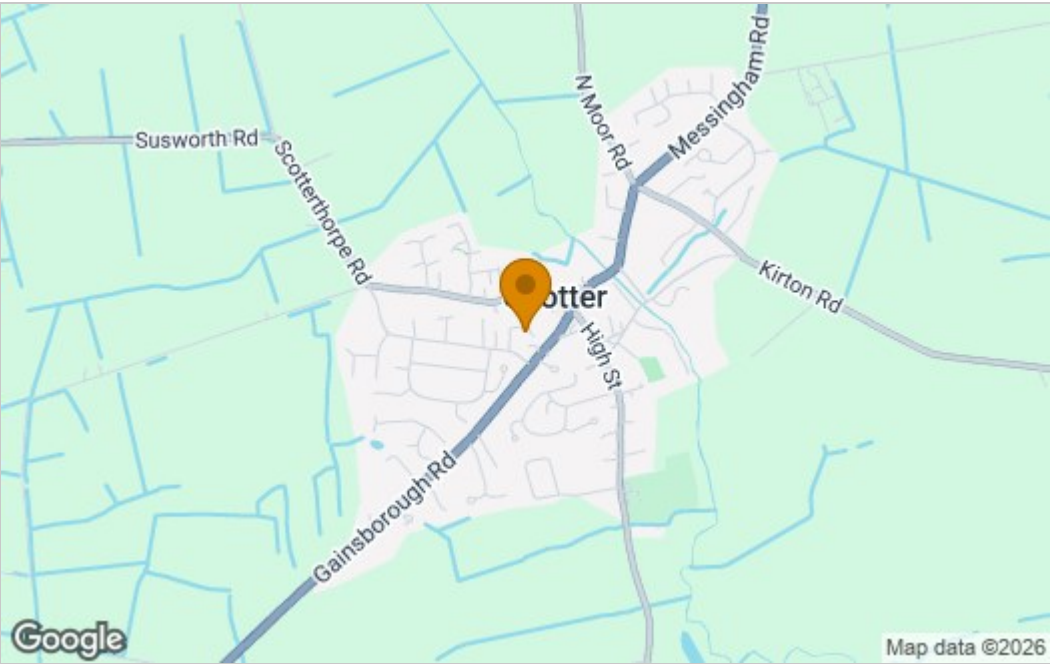


Floor Plan

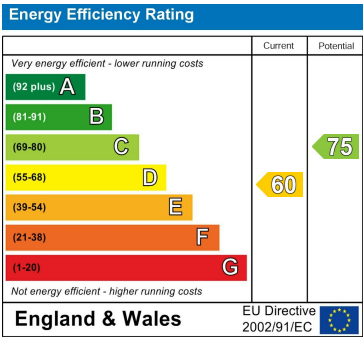


Total area: approx. 129.4 sq. metres (1393.0 sq. feet)

Area Map



Energy Efficiency Graph



These particulars, whilst believed to be accurate are set out as a general outline only for guidance and do not constitute any part of an offer or contract. Intending purchasers should not rely on them as statements of representation of fact, but must satisfy themselves by inspection or otherwise as to their accuracy. No person in this firm's employment has the authority to make or give any representation or warranty in respect of the property.